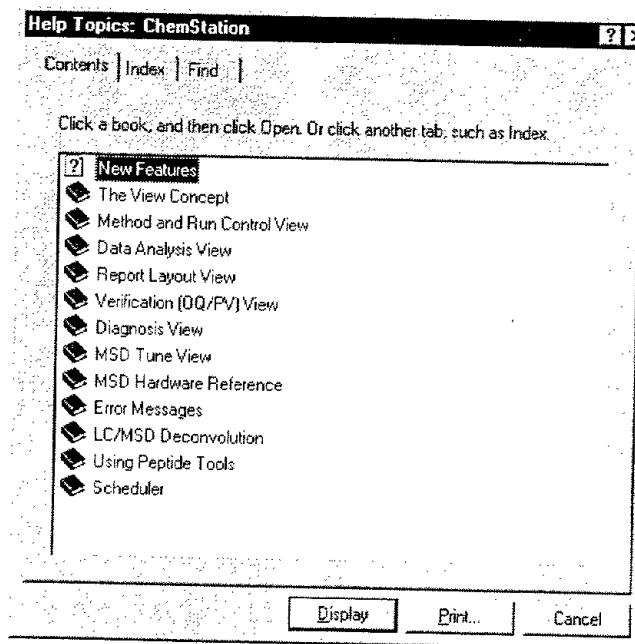


# Using Online Help


To access the online help, select **Help Topics** from the Help menu in any window, or click the **Help** button on any dialog box.


When you jump to a help topic, it is displayed in another help window. Click the **Contents** button in that window to return to this list of help topics.


| Item     | Description   |
|----------|---|
| Contents | Displays the list of help topics (shown to the right).  |
| Index    | Lets you use keywords to search the help index for a particular topic.  |
| Find     | Lets you type a word or phrase and then displays a list of all the topics in the online help that contain those words.  |
| Open     | Opens the selected book or help topic. When you open a book or select a book that is already open, this button changes to <b>Close</b> .  |
| Print    | Prints the selected book or help topic for future reference. If you select a book, then all the help topics contained in the book are printed. To print a popup, click on it with the right mouse button and select <b>Print</b> from the menu. |
| Cancel   | Closes the Help Topics window.  |



## Help Icons

- 

Indicates a book containing more help topics. To open a book, select it then double-click or click the **Open** button.
- 

Indicates an open book of help topics. To close an open book, select it then double-click or click the **Close** button.
- 

Indicates a help topic. To jump to a help topic, select it then double-click or click the **Open** button.